



**CYBER
RECYCLING**
Recycle, it's your future.

TEST & TAG



TEST & TAG ELECTRICAL EQUIPMENT



The Occupational Safety and Health Act 1984 (OSH Act) requires electrical equipment at workplaces to be safe and not expose workers to hazards.

As prescribed by the Occupational Safety and Health Regulations 1996 (the OSH regulations), the person having control of a workplace or access to that workplace, i.e. employer, the self-employed person, main contractor, must ensure that all portable plug-in electrical equipment and residual current devices (RCDs) at the workplace are safe and appropriately inspected, tested and maintained by a competent person (The Occupational Safety and Health Regulations 1996 (the OSH regulations) 3.59 to 3.63, 4.37 and 4.38).

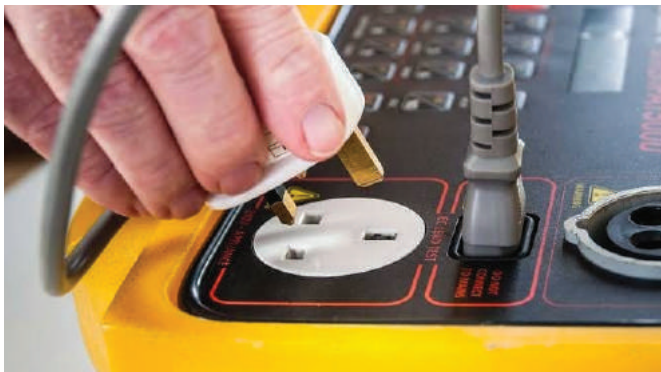
Cyber Recycling offers Test & Tag services that will ensure your organisation is both safe and compliant with the OH&S Standards in Australia. We extend an inclusive electrical Test and Tag service solution that will fit in your budget and help you to develop a documented report while maintaining a safe work place.

All Electrical Test & Tag Services are completed in accordance with AS/ANZ 3760:2010 standard.

WHAT WE TEST



Visual Inspection



Insulation Resistance



Earth Continuity



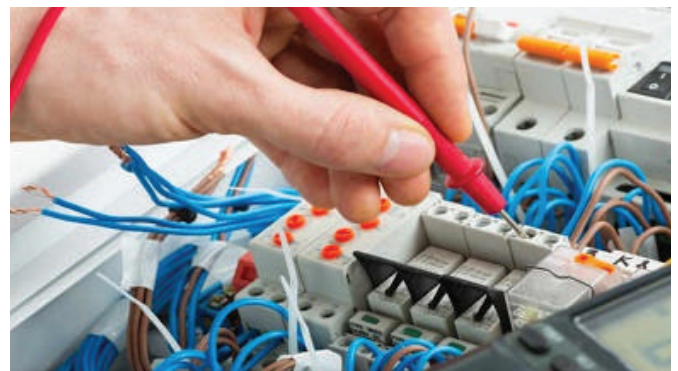
Polarity



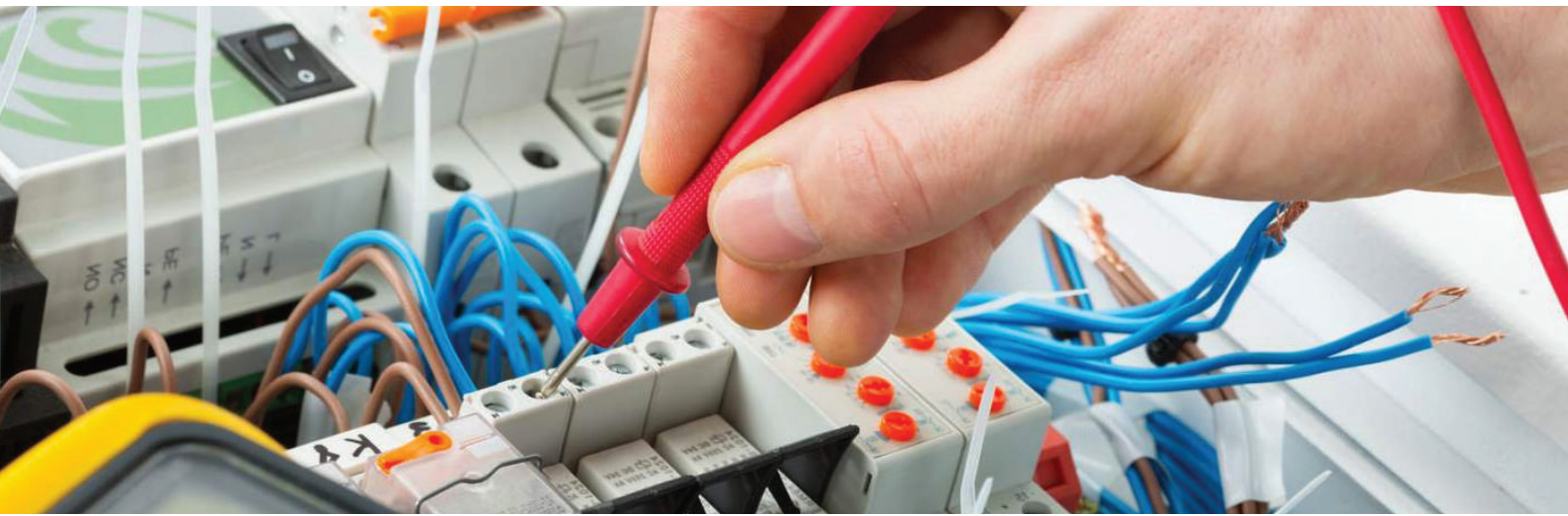
Earth Leakage



Microwave Leakage Safety Audits



RCD Safety Audits



Examples of Electrical items tested are:

- Phone, Tablets, Laptops, eftpos, Computers, Printers and other office equipment
- Extension Leads and Power Boards
- Kitchen appliances such as Microwaves
- In the workshop environment – Power Tools, Battery Charges and Machinery

In addition to test and tag services, we are able to provide a range of convenient products to the customers at very competitive prices, such as **RCD Boxes, 25 Metre Leads, Power Leads** for all electrical appliances.

At Cyber Recycling, only competent technicians will undertake the testing of electrical equipment. Our talented technicians have acquired, through training, qualification or experience, or a combination of these, the knowledge and skills required to test electrical equipment competently.

Our technicians can recognise electrical hazards or potentially unsafe conditions and also know what to:

- look at;
- look for; and
- do.



RECOMMENDED EQUIPMENT TEST AND TAG SERVICE CYCLE GUIDE

Type of environment and/or equipment	Interval between inspection and tests				
	Equipment including Class I equipment, Class II equipment, cord sets, cord extension sets and EPODs	Residual current devices (RCDs)			
		Push-button test – by user		Operating time and push-button test	
(a)	(b)	Portable (c)	Fixed (d)	Portable (e)	Fixed (f)
1 Factories, workshops, places of manufacture, assembly, maintenance or fabrication	6 months	Daily, or before every use, whichever is the longer	6 months	12 months	12 months
2 Environment where the equipment orsupply flexible cord is subject to flexing in normal use OR is open to abuse OR is in a hostile environment	12 months	3 months	6 months	12 months	12 months
3 Environment where the equipment orsupply cord is NOTsubject to flexing in normal use and is NOT open to abuse and is NOT in a hostile environment	5 years	3 months	6 months	2 years	2 years
4 Residential type areas of: hotels, residential institutions, motels, boarding houses, halls, hostels accommodation houses, and the like	2 years	6 months	6 months	2 years	2 years
5 Equipment used for commercial cleaning	6 months	Daily, or before every use, whichever is the longer	N/A	6 months	N/A
6 Hire equipment: Inspection	Prior to hire	Including push-button test by hirer prior tohire		N/A	N/A
Test and tag	3 months	N/A		3 months	12 months
7 Repaired, serviced and second-hand equipment	After repair or service which could affect electrical safety, or on reintroduction to service, refer to AS/NZS 5762				

*As per AS/NZS 3760 standard :Table 4 and this page must be read in conjunction with AS/NZS 3760 as a whole and particularly 2.1.

CLIENT NAME

Asset ID	Description	User	Test Instrument	Date	Retest Period	Next Test	Result
----------	-------------	------	-----------------	------	---------------	-----------	--------

[illegible][illegible]

PORTABLE APPLIANCE TESTER USED



TnP-500b



Microwave leak detector will ensure that your kitchen area meets AS/NZS 3760 and AS/NZS 60335.2.25 requirements.

Electrical Testers Products	Class I & Class II	Extension Leads	Leakage Current	250V Insulation	500V Insulation	>10AMP Operation	RCD Testing	Mains Supply Test	Power Measurement	3 Phase Compatible	Microwave Radiations
Wavecom TnP-500											
Seaward Primetest Elite											
DeltaPAT Complete											
Metrel Delta Pro Print Pack											
Seaward Primetest PRO Kit											
Seaward Elite Kit											
Wavecom WCM-5M Microwave Tester											

Please note: This is only a basic guide for testing equipment and currently used at the time of publication. We do not intend to mislead consumers in anyway. For full specifications, please refer to the Manufacturers documentation or call us on +61 404 606 860.



**CYBER
RECYCLING**
Recycle, it's your future.

TEST & TAG ELECTRICAL EQUIPMENT



ELECTRICAL TEST TAGS

FAILED TEST TAGS



Used for the items that has failed a test and need to be with drawn from service.

NEW TO SERVICE TAGS



These tags are used for items that are new to service and require testing and tagging in the future.

RCD TEST TAGS



These tags used for the RCD test identifications.

HI VIS FAILED TAGS



Light duty tags used for large volume testing in low traffic areas.

HI VIS FAILED TAGS



High visibility tags ensure that any failed items are clearly identified as a 'Failed Item' to ensure the safety of others.

HEAVY DUTY TAGS



Heavy duty tags used in both indoor and outdoor has a self-laminating security flap to protect the printed information.

SURFACE MOUNT PASS TAGS



These Surface Mounted Tags are specially designed for items where the other standard tags are too large.

INDUSTRIAL STRENGTH TAGS



Toughest self adhesive tags used for high-risk and harsh environment.

MICROWAVE LEAKAGE LABELS



Surface amount tag used to record test result on microwave leakage.



TESTER CALIBRATION

At Cyber Recycling all the Portable Appliance Tester calibrated yearly and is an essential process for us that regularly undertakes testing and tagging. Our PAT tester is maintained carefully to ensure it is working as it should.

Which is as per AS/NZS 3760 2010 Standards, Appendix A ref: A6 TEST EQUIPMENT. "The equipment required to carry out the tests detailed in this Standard (AS/NZS 3760) should be subjected to routine verification at regular intervals to ensure it is working correctly and its accuracy is maintained."

OUR CALIBRATION PROCESS



REMINDER

Reminders are set, and the supervisor collects the testers from technicians and tagged as due for calibration/Out of calibration.



BOOK

Admin team arrange the booking with the authorised calibration & testing centres.



SEND

Send the testers to the authorised calibration & testing centres.



CALIBRATE

Authorised calibration & testing centres undertakes calibration.



COLLECT

Collect the testers from the authorised calibration & testing centres with the calibration certificates.



UPDATE

Update the calibration details on the register and reset the reminder for the next due date for calibration.



HANDOVER

Admin team handover the calibrated equipment to the supervisor for allocation.



ALLOCATE

Supervisor allocates the tester to the technicians to perform their job.



CYBER
RECYCLING
Recycle, it's your future.

32 Bannick Court
Canningvale, WA 6155
Email : info@cyberrecycling.com.au
Phone: 1300 206 955, +61 404 606 860

